

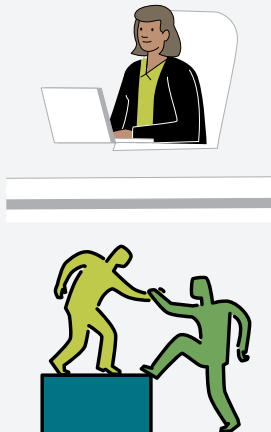
# What happens in a court Communication Assessment

## Who?



- I am a **Speech Language Therapist**. My work is about communication
- **Talking, listening** and **understanding** what others are saying

## Who asked me to see you?



- The **judge** asked me to see you
- I **do not work** for the police or for your lawyer
- I am **neutral and impartial**. This means I am not on anyone's side
- **My job** is to help everyone involved with court **communicate with you**
- This is to **make sure you understand** what is being said
- It is to **make sure you can join in** when you need to say things

## Why am I seeing you?



- See how you are getting on with **communication** (talking and listening)
- See **what might help you** with communication in court

## What will happen when I see you?



We will do some different **talking** and **listening** tasks.

## How long will it take?

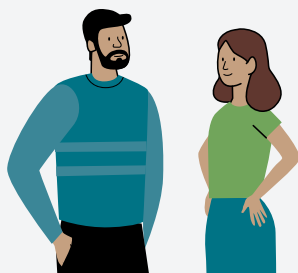


- It will take about **one hour**
- You can have **breaks** if you need to



We will **not talk** about anything to do with **why** you need to go to **court**.

## Support person



You can bring a **support person** with you.

## Report



- I will write a **report** for the **judge**
- The report will be about your **communication**
- It will say what kinds of things will **help** you when you are **talking or listening** in court

## Confidential



- The report I write is **private**
- It will only go to the **people at court** who need to know this information
- I **will not** give the **report** to anyone else
- I **will not** talk to anybody else about what you tell me

## Questions?



- You can ask me any **questions** when you see me